



MASTER
LIVEBOARDS

Hotel Summary : Quito

Mercure Hotel Alameda

Alameda Hotel Mercure is situated on Quito's showcase shopping street, Avenida Amazonas, within the district of Mariscal Sucre. Hotel facilities include a casino and well-stocked library.

All guest rooms at the Alameda Hotel Mercure feature air conditioning, a satellite TV with video games and an en suite bathroom with a bathtub. In addition, the bedrooms all have Wi-Fi connectivity.

Restaurant Spicy is the hotel's elegant dining establishment, serving a varied menu of local and international cuisine. There are also many restaurants within a few minutes' walk of the hotel.



Guests can make use of the Alameda Hotel Mercure's leisure facilities, which include a casino and a fitness centre. The hotel is close to many sites of cultural interest, including the Casa de Cultura Ecuatoriana which is 5 minutes' walk away. The hotel is 41 km from Mariscal Sucre International Airport.

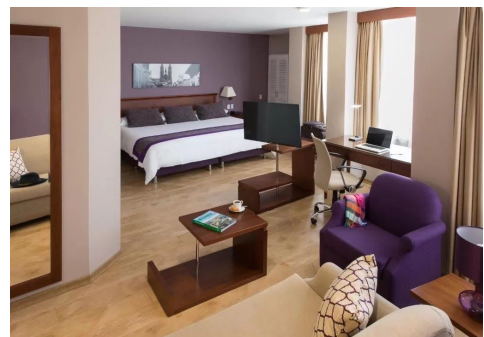
Prices from

Superior Double - \$150 USD

Superior Single - \$140 USD

Deluxe Single or Double - \$187 USD

(all prices include 22% tax and breakfast)



Hotel Dann Carlton

Quito Dann Carlton offers stylish accommodation an hours drive from Mariscal Sucre Airport. The hotel boasts a panoramic swimming pool, a fitness area, and an exclusive restaurant to enjoy Ecuadorian cuisine.

Rooms at the Carlton have 5-star decor. They are fully carpeted and styled in elegant tan hues. Amenities include a seating area, work desk, and cable TV. All rooms have free Wi-Fi.



A buffet breakfast is served at Park 20 restaurant with fresh fruits, coffee, and local specialties. The bar invites you to an evening of cocktails and live music.

The famous city landmark Capilla del Hombre, is only 4 blocks away and Bella Vista Metropolitan Park is a 15-minute walk. Airport shuttles can be arranged for a fee.

Prices from

Superior Double - \$203 USD

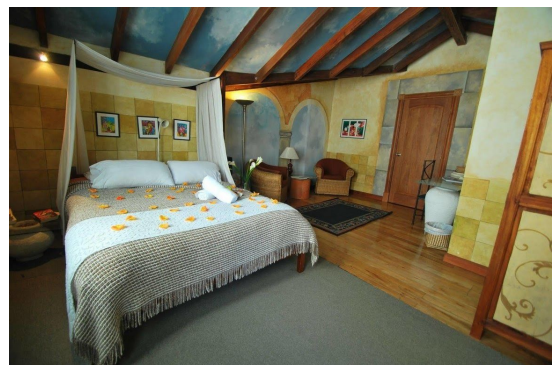
Superior Single - \$185 USD

(all prices include 22% tax and breakfast)

Boutique Hotel Cafe Cultura

Situated in a beautiful colonial building in the centre of Quito, Hotel Café Cultura offers its guests accommodation with unique characteristics and an original interior. Free Wi-Fi is available.

All rooms at Café Cultura are decorated with a fine mix of English tradition and contemporary trends. They are air-conditioned and feature an en suite bathroom.



The hotel's Café- Bistro serves local and international dishes. Relax during the evening in front of the fireplace while reading a book from the in house library.

Located 700 metres from Casa de la Cultura Ecuatoriana and 2.7 km from the Museum of Colonial Art. Free parking is possible at a nearby location upon reservation.

Prices from

Standard Double - \$104 USD

Standard Single - \$90 USD

(all prices include 22% tax and breakfast)

Anahi Boutique Hotel

Anahi combines colonial and modern architecture in Quito's trendy La Mariscal area, featuring a different style for each room. It offers free Wi-Fi, a spa and a gourmet restaurant.

The 4-star Anahi Boutique Hotel supplies guests with luxurious suites, ranging from classic to unconventional décor, with tasteful artwork painted on canvas or directly on the walls. Each room also provides a 32-inch plasma cable TV and a well-furnished minibar.



At Nidra Spa, various services are performed. They include aromatherapy, Thai massage and Taoist bodywork, a massage technique for increasing energy and self awareness.

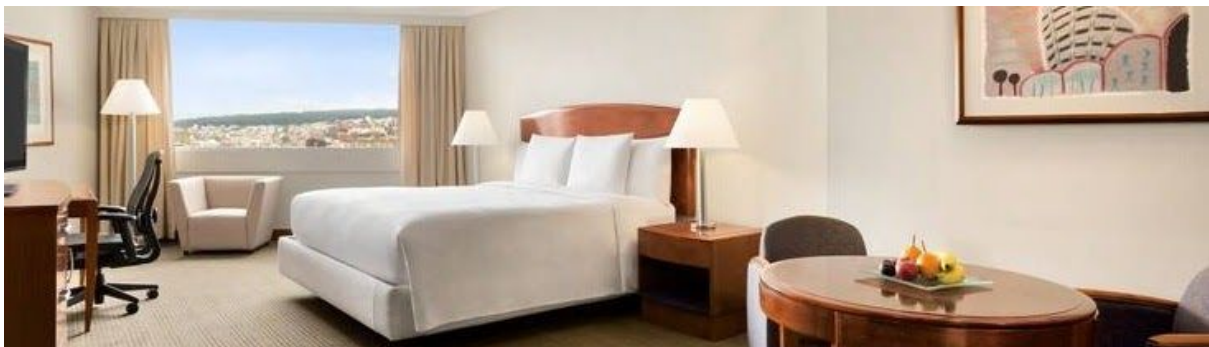
After relaxation, guests can enjoy gourmet Ecuadorian and international cuisine in La Piedra restaurant, or choose a high quality wine from the bar selection.

Prices from

Single or Double Suite - \$164 USD (prices include 22% tax and breakfast)

Hilton Colon

Located in the heart of Quito, the 5-star Hilton Colon Quito Hotel offers a heated outdoor pool, a spa and a fitness centre. Guests can enjoy 4 on-site restaurants and an executive lounge.



The spacious air-conditioned rooms at Hilton Colon Quito Hotel feature panoramic views of the city and mountains. All rooms include a minibar and cable TV.

The Hilton Colon Quito is only a 10-minute walk from Quito's Colonial Old Town, a UNESCO World Heritage site. Craft markets, museums and El Ejido Park are all within walking distance. Mariscal Sucre Airport is 7.5 km away.

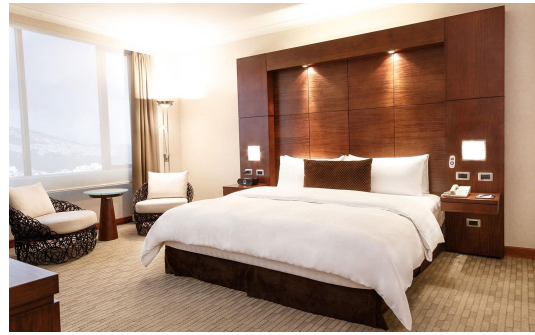
Prices from

Club Superior Single or Double - \$212 USD (prices include 22% tax and breakfast)

Swissotel

Swissôtel offers elegant accommodation in Quito's affluent commercial and residential district. It features 2 pools, tennis and squash courts, as well as a spa with hydromassage tub and massage treatments. Free Wi-Fi is available.

Featuring wood accents and Egyptian cotton linens, rooms at Swissôtel Quito are bright, air conditioned and equipped. They all come with cable TV channels, minibar and in-room safe.



Five on-site restaurants offer a range of dishes from renowned French, Swiss and Japanese culinary traditions.

Prices from

Standard Single - \$260 USD

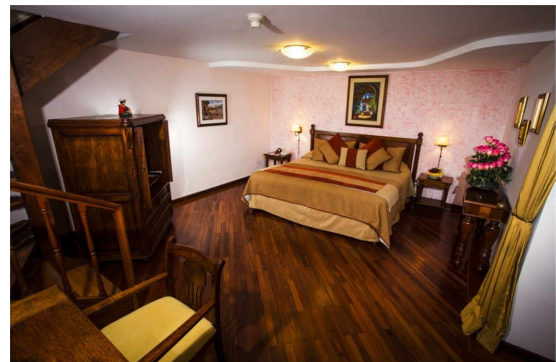
Standard Double - \$295 USD

(all prices include 22% tax and breakfast)

Hotel Patio Andaluz

Hotel Patio Andaluz has been declared an official Ecuadorian National Treasure. Located in the heart of historic Quito Antiguo, it offers elegant rooms with private bathrooms and cable TV.

The entire hotel features classic colonial-style decor and furnishings. The warmly coloured rooms have polished wood floors and ornate wooden furniture.



At Patio Andaluz, guests can dine in the exclusive El Rincón de Cantuña restaurant, which serves Spanish cuisine and local specialties. The tapas bar Marqués de Jerez is an ideal place for relaxing with a drink.

As well as offering a 24-hour front desk, there is free Wi-Fi in public areas of the hotel.

Patio Andalus Hotel was declared a Cultural Patrimony of Humanity by UNESCO in 1978. It is surrounded by historical churches and monuments. The Parque Metropolitano Bellavista is located less than 5 minutes' away by car.

Prices from

Standard Single - \$200 USD

Standard Double - \$228 USD

(all prices include 22% tax and breakfast)

