

Master Liveboards - Rates & Inclusions

2025 - 2028



Photo: Daniel Norwood

GALAPAGOS MASTER

INDO MASTER

MALDIVES MASTER

PACIFIC MASTER

SOLOMONS MASTER

THAILAND MASTER

EGYPT - BLUE HORIZON

EGYPT - BLUE MELODY

PALAU SIREN

PHILIPPINE SIREN

GALAPAGOS MASTER



Retail Rates *		Classic cabin	Premium cabin	Full charter from**
2025	7 nights	7,140 USD	7,245 USD	100,800 USD
	10 nights	10,400 USD	10,550 USD	146,800 USD
2026	7 nights	7,140 USD	7,245 USD	100,800 USD
	10 nights	10,400 USD	10,550 USD	146,800 USD
2027	7 nights	7,140 USD	7,245 USD	100,800 USD
	10 nights	10,400 USD	10,550 USD	146,800 USD
2028	7 nights	7,140 USD	7,245 USD	100,800 USD
	10 nights	10,400 USD	10,550 USD	146,800 USD

*Retail rates are per person, based on two people sharing a cabin. Single occupancy is subject to availability and an 80% supplemental charge.

**We offer 2 charter options on Galapagos Master:

- Full charter (8 cabins/16 spaces) 14 paid + 2 FOC;
- Half charter (8 spaces) 7 paid + 1 FOC.

Charter rates are calculated based on the cabin spaces requested, with all FOC spaces based on the lowest-priced spaces.

Inclusions

- Embarkation/disembarkation transfers in San Cristobal
- En-suite accommodation including towels, linen, and air conditioning.
- Full board including 3 meals and snacks, drinking water, soft drinks and fruit juices, tea and coffee
- Up to 4 guided dives per day
- 11 Litre (AL80) cylinder, weights & air fills
- Deck Towels

Exclusions

- International and domestic flights
- Ingala Transit Control Card
- Galapagos National Park Entrance Fees
- Travel and dive insurance (compulsory)
- Scuba equipment rental
- 12 Litre or 15 Litre cylinders
- Nitrox fills – up to 32%
- Alcoholic beverages - beer, wine and spirits are available

Please visit our website for an up-to-date price list of the extras.

GALAPAGOS MASTER



Cabins 1-2: Classic Twin

Cabins 3-4: Classic Twin/Double

Cabin 5: Premium Double (on request only)

Cabins 6-9: Premium Twin/Double

Maximum permitted occupancy on Galapagos Master is 16 guests.

INDO MASTER



2025 Retail Rates*		Classic Cabin	Premium Cabin	Superior Cabin	Full Charter Rates**
Komodo	7 nights	3,500 USD	3,675 USD	3,780 USD	58,170 USD
	10 nights	5,000 USD	5,250 USD	5,400 USD	83,100 USD
Raja Ampat	7 nights	3,850 USD	4,025 USD	4,130 USD	63,770 USD
	10 nights	5,500 USD	5,750 USD	5,900 USD	91,100 USD
Banda Sea	6 nights	3,300 USD	3,450 USD	3,540 USD	54,660 USD
	7 nights	3,850 USD	4,025 USD	4,130 USD	63,770 USD
	10 nights	5,500 USD	5,750 USD	5,900 USD	91,100 USD
Transition Itineraries	10 nights	5,700 USD	5,850 USD	6,000 USD	93,300 USD
	12 nights	6,840 USD	7,020 USD	7,200 USD	111,960 USD

2026 - 2028 Retail Rates*		Classic Cabin	Premium Cabin	Superior Cabin	Full Charter Rates**
Komodo	7 nights	3,605 USD	3,787 USD	3,892 USD	59,920 USD
	10 nights	5,150 USD	5,410 USD	5,560 USD	85,600 USD
Raja Ampat	7 nights	3,969 USD	4,144 USD	4,256 USD	65,702 USD
	10 nights	5,670 USD	5,920 USD	6,080 USD	93,860 USD
Banda Sea	6 nights	3,402 USD	3,552 USD	3,648 USD	56,316 USD
	7 nights	3,969 USD	4,144 USD	4,256 USD	65,702 USD
	10 nights	5,670 USD	5,920 USD	6,080 USD	93,860 USD
Transition Itineraries	10 nights	5,870 USD	6,030 USD	6,180 USD	96,120 USD
	12 nights	7,044 USD	7,236 USD	7,416 USD	115,344 USD

Transition itineraries are Triton Bay & Raja Ampat, Halmahera Raja Ampat & Lembah and Alor Archipelago.

*Retail rates are per person, based on two people sharing. An 80% supplemental charge applies for single occupancy.

**Full charter is 18 spaces (16 paid + 2 FOC spaces). We also offer half charters as 8 paid + 1 FOC with rates based on the selected cabin types and FOC at the lowest-priced space.

INDO MASTER

Inclusions

- Embarkation/disembarkation transfers
- En-suite, air-conditioned accommodation including towels, bed linen and shower gel.
- Full board including snacks, drinking water, soft drinks, fruit juices, tea, and coffee.
- Up to 4 guided dives per day
- 11 Litre (AL80) cylinder, weights & air fills.
- Deck towels

Exclusions

- International and domestic flights
- Travel and dive insurance (compulsory)
- Marine Park, Port and Local Tax fees
- Alcoholic beverages - beer, wine and spirits are available
- Equipment rental
- 13 Litre (AL100) cylinders
- Nitrox fills – up to 32%

Please visit our website for an up-to-date price list of the extras.



Cabins 1-2: Superior Double

Cabins 3-4: Premium Twin

Cabins 5-6: Classic Double

Cabins 7-8: Classic Twin

Cabin 9: Premium Twin/Double

MALDIVES MASTER



2025 / 2026 Base Retail Rates*		Premium Twin/Dbl	Premium Single	Superior Cabin	Full Charter Rates**
November - April	7 nights	2,975 USD	3,325 USD	3,500 USD	70,350 USD
	10 nights	4,250 USD	4,750 USD	5,000 USD	100,500 USD
May - October	7 nights	2,275 USD	2,625 USD	2,800 USD	54,950 USD
	10 nights	3,250 USD	3,750 USD	4,000 USD	78,500 USD

2027 / 2028 Base Retail Rates*		Premium Twin/Dbl	Premium Single	Superior Cabin	Full Charter Rates**
November - April	7 nights	3,150 USD	3,500 USD	3,675 USD	74,200 USD
	10 nights	4,500 USD	5,000 USD	5,250 USD	106,000 USD
May - October	7 nights	2,450 USD	2,800 USD	2,975 USD	58,800 USD
	10 nights	3,500 USD	4,000 USD	4,250 USD	84,000 USD

*Retail Rates are per person, based on two people sharing (or per person in Premium Single). 80% supplement applies for single occupancy in a 2 person cabin.

** Full charter rate is 26 spaces calculated as 22 paid spaces + 4 Premium Twin/Double Cabin spaces FOC.

We also offer group rates calculated on the cabin spaces requested with FOC(s) deducted at the lowest price: 5 paid + 1 FOC; 10 paid + 2 FOC; 15 paid + 3 FOC.

Inclusions

- Embarkation/disembarkation airport transfers
- Onboard accommodation including towels, linen, and air conditioning
- Full board including breakfast, lunch, dinner and snacks
- Drinking water, tea and coffee
- Up to 3 guided dives per day
- Single 11 Litre (AL80) cylinder with air fills
- Weights, weigh belt, SMB and reel

Exclusions

- International and domestic flights
- Hotel transfers
- Insurance (compulsory)
- Maldives Green Tax
- GST (applies to payments onboard)
- Equipment rental
- Additional cylinders
- Nitrox
- Oxygen fills
- Rebreather consumables
- Alcoholic beverages
- Soft drinks

Please visit our website for an up-to-date price list of the extras.

MALDIVES MASTER



Upper Deck

Main Deck

Lower Deck

Cabins 101-108: Premium Twin/Double Cabins

Cabins 109-110: Superior Double Cabins

Cabins 111-112: Superior Twin/Double

Cabins 113-114: Premium Single Cabins

PACIFIC MASTER



Truk Lagoon (maximum 20 guests)

Retail Rates*		Standard Twin	Standard Single	Classic Cabin	Premium Cabin	Full charter **
2025	7 nights	2,695 USD	3,150 USD	3,570 USD	3,710 USD	61,110 USD
	9 nights	3,465 USD	4,050 USD	4,590 USD	4,770 USD	78,570 USD
	10 nights	3,850 USD	4,500 USD	5,100 USD	5,300 USD	87,300 USD
2026	7 nights	2,695 USD	3,150 USD	3,570 USD	3,710 USD	61,110 USD
	9 nights	3,465 USD	4,050 USD	4,590 USD	4,770 USD	78,570 USD
	10 nights	3,850 USD	4,500 USD	5,100 USD	5,300 USD	87,300 USD
2027	7 nights	2,695 USD	3,150 USD	3,570 USD	3,710 USD	61,110 USD
	9 nights	3,465 USD	4,050 USD	4,590 USD	4,770 USD	78,570 USD
	10 nights	3,850 USD	4,500 USD	5,100 USD	5,300 USD	87,300 USD
2028	7 nights	2,695 USD	3,150 USD	3,570 USD	3,710 USD	61,110 USD
	9 nights	3,465 USD	4,050 USD	4,590 USD	4,770 USD	78,570 USD
	10 nights	3,850 USD	4,500 USD	5,100 USD	5,300 USD	87,300 USD

Bikini Atoll (maximum 18 guests)

Retail Rates*		Standard Twin	Standard Single	Classic Cabin	Premium Cabin	Full charter from**
2025	10 nights	5,850 USD	6,700 USD	7,600 USD	7,800 USD	114,500 USD
	11 nights	6,435 USD	7,370 USD	8,360 USD	8,580 USD	125,950 USD
	13 nights	7,605 USD	8,710 USD	9,880 USD	10,140 USD	148,850 USD
2026	10 nights	5,850 USD	6,700 USD	7,600 USD	7,800 USD	114,500 USD
	11 nights	6,435 USD	7,370 USD	8,360 USD	8,580 USD	125,950 USD
	13 nights	7,605 USD	8,710 USD	9,880 USD	10,140 USD	148,850 USD
2028	11 nights	6,875 USD	7,810 USD	8,800 USD	9,020 USD	132,990 USD
	12 nights	7,500 USD	8,520 USD	9,600 USD	9,840 USD	145,080 USD

*Retail prices are per person, based on standard occupancy for each cabin type. Single occupancy of twin or double bed cabins is subject to an 80% supplemental charge.

**We offer full and half charter options with rates calculated on requested cabin types and FOC(s) based on the lowest-priced of the chosen spaces.

- Truk Lagoon itineraries: Full charter (20 pax) 18 paid + 2 FOC/ Half charter (10 pax) 9 + 1 FOC
- Bikini Atoll itineraries: Full charter (18 pax) 16 paid + 2 FOC / Half charter (9 pax) 8 + 1 FOC

PACIFIC MASTER

Inclusions

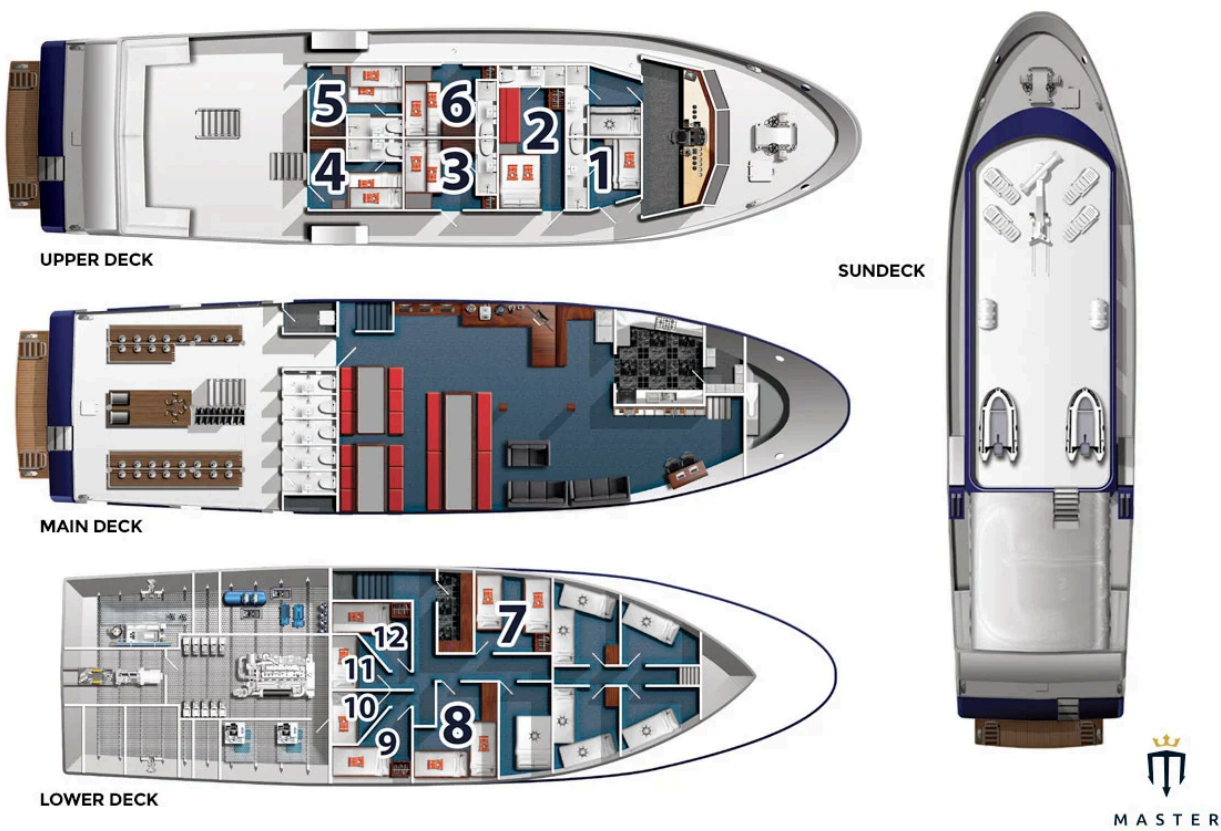
- Embarkation/disembarkation transfers
- Accommodation including towels, linen, air conditioning and en-suites.
- Full board including 3 meals and snacks, drinking water, soft drinks and fruit juices, tea and coffee
- Up to 4 dives per day*
- 11 Litre (AL80) cylinder, weights & air fills
- Deck Towels

* Maximum 2 dives per day in Bikini Atoll

Exclusions

- International and domestic flights
- Alcoholic beverages
- Travel and dive insurance (compulsory)
- Standard equipment rental
- Additional cylinders
- Technical equipment rental
- Nitrox fills
- Oxygen and Helium fills
- Rebreather consumables
- Applicable Port, Park and Tax fees

Please visit our website for an up-to-date price list of the extras.



Cabin 1: Classic Twin

Cabin 2: Premium Double

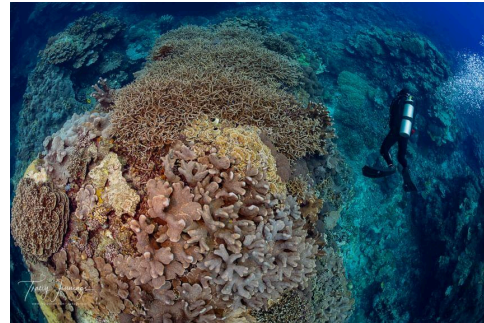
Cabins 3-6: Classic Twin/Double

Cabins 7-8: Standard Twin

Cabins 9-12: Standard Single

NOTE: Standard cabins do not have en-suite bathrooms.

SOLOMONS MASTER



Solomon Islands

Retail Rates*		Classic cabins	Premium cabins	Superior cabin	Full Charter**
2025	7 nights	4,445 USD	4,816 USD	5,075 USD	66,458 USD
	10 nights	6,350 USD	6,880 USD	7,250 USD	94,940 USD
2026	7 nights	4,445 USD	4,816 USD	5,075 USD	66,458 USD
	10 nights	6,350 USD	6,880 USD	7,250 USD	94,940 USD
2027	7 nights	4,445 USD	4,816 USD	5,075 USD	66,458 USD
	10 nights	6,350 USD	6,880 USD	7,250 USD	94,940 USD
2028	7 nights	4,445 USD	4,816 USD	5,075 USD	66,458 USD
	10 nights	6,350 USD	6,880 USD	7,250 USD	94,940 USD

*Retail rates are per person, based on two people sharing a cabin. Single occupancy is subject to an 80% supplemental charge.

**We offer 2 charter options on Solomons Master:

- Full charter (16 pax) 14 paid + 2 FOC
- Half charter (8 pax) 7 paid + 1 FOC

Half charter rates are calculated based on the requested cabin spaces with the FOC space being the lowest-priced.

Inclusions

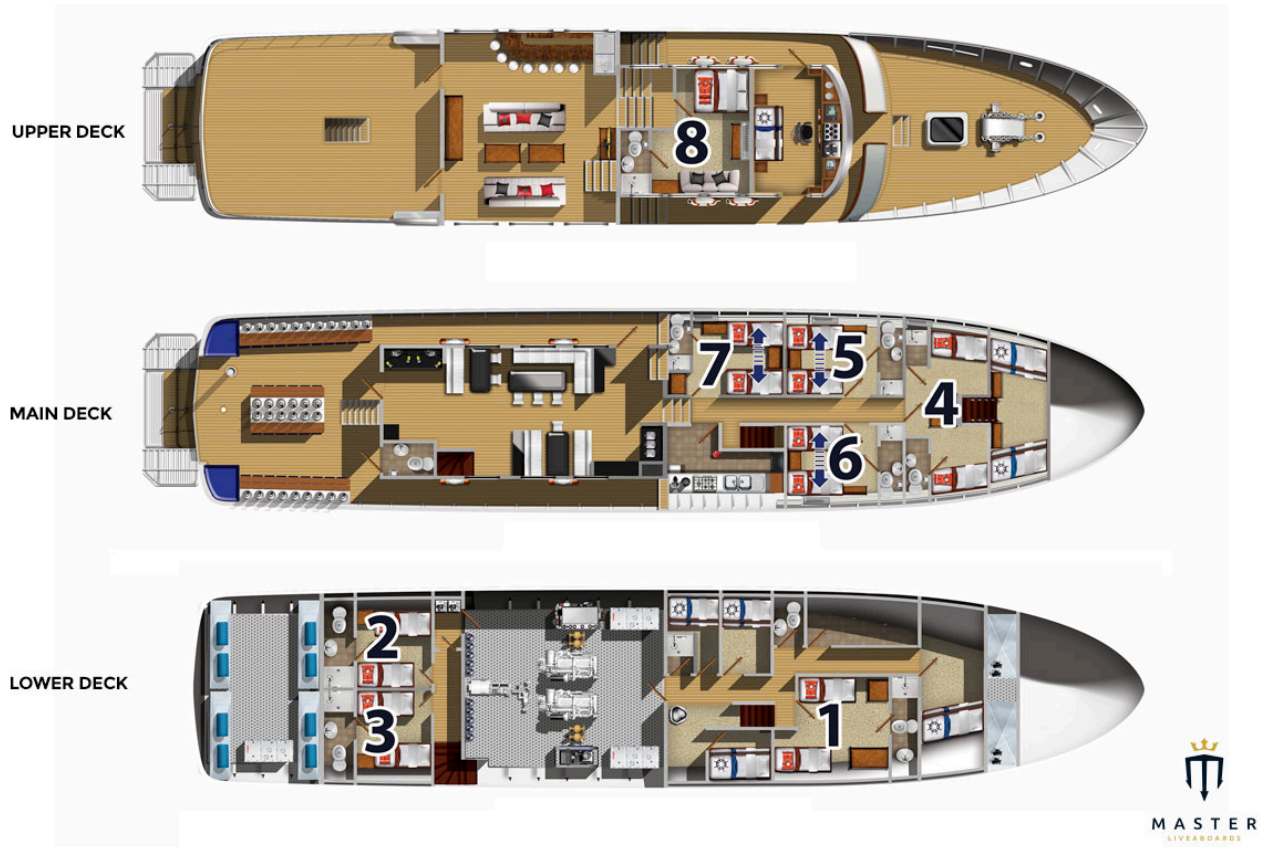
- Embarkation/disembarkation transfers
- Onboard accommodation including towels, linen, and air conditioning
- Full board including breakfast, lunch, dinner and snacks,
- Unlimited tea, coffee, juices, soft drinks and drinking water
- Up to 4 guided dives per day, (3 day dives and 1 night dive - conditions permitting)
- 11 Litre (AL80) cylinder with air fills
- Weights and weight belt

Exclusions

- International and domestic flights
- Alcoholic beverages
- Travel and dive insurance (compulsory)
- Applicable Port, Park and Tax fees
- Standard equipment rental
- Additional cylinders
- Nitrox fills – up to 32%
- Technical equipment rental
- Oxygen and Helium fills
- Rebreather consumables

Please visit our website for an up-to-date price list of the extras.

SOLOMONS MASTER



Cabins 1-3: Classic Twin

Cabin 4: Premium Twin

Cabins 5-7: Premium Twin/Double

Cabin 8: Superior Double

THAILAND MASTER



Thailand High Season: Jan-April / Oct-Dec (Similan & Surin Islands / Southern Thailand)

Thailand Low Season: May - September (Southern Thailand / Phi Phi Islands)

Thailand	Retail Rates*	Twin Cabin	Quad Cabin	Charter**
2025 - 2027	4 nights	1,828 USD	1,360 USD	26,440 USD
	6 nights	2,742 USD	2,040 USD	39,660 USD
	10 nights	4,570 USD	3,400 USD	66,100USD
2025 - 2027 (Low Season)	4 nights	1,350 USD	1,000 USD	19,500 USD
2028	4 nights	1,828 USD	1,360 USD	26,440 USD
	6 nights	2,742 USD	2,040 USD	39,660 USD
	10 nights	4,570 USD	3,400 USD	66,100USD
2028 (Low Season)	4 nights	1,350 USD	1,000 USD	19,500 USD

Myanmar: January - March only

Myanmar	Retail Rates*	Twin Cabin	Quad Cabin	Charter
2025 - 2027	7 nights	3,500 USD	2,625 USD	50,750 USD
	10 nights	5,000 USD	3,750 USD	72,500 USD
2028	7 nights	3,500 USD	2,625 USD	50,750 USD
	10 nights	5,000 USD	3,750 USD	72,500 USD

*Prices are per person based on standard occupancy for each cabin type. Supplemental charges apply for reduced occupancy.

**We offer 2 charter options on Thailand Master: Full charter (18 spaces) 16 paid + 2 FOC, Half charter (9 spaces) 8 paid + 1 FOC. Rates are calculated on the cabin spaces requested, with all FOC spaces based on the lowest-priced spaces.

THAILAND MASTER

Inclusions

- Shared embarkation and disembarkation transfers*
- Accommodation including towels, linen, air conditioning
- Full board including 3 meals and snacks, drinking water, soft drinks and fruit juices, tea and coffee
- Up to 4 guided dives per day, (3 day dives & 1 optional night dive) conditions permitting
- 11 Litre (AL80) cylinder, weights & air fills
- Deck Towels

Included transfers have specific pick-up times and locations. Additional charges apply for other transfers.

Exclusions

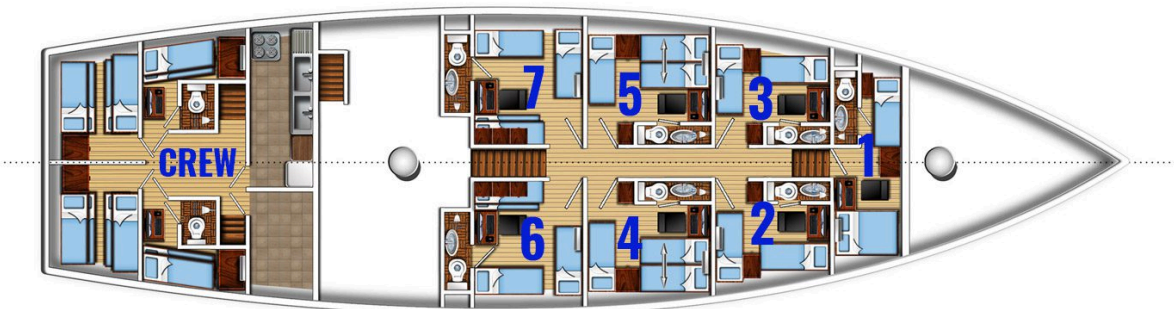
- International and domestic flights
- Private transfers
- Marine Park, Port and local tax fees
- Alcoholic beverages – beer and wine are available
- Travel and dive insurance (compulsory)
- Equipment rental
- 13 Litre (AL100) cylinders
- Nitrox fills – up to 32%

Please visit our website for an up-to-date price list of the extras.

THE PHINISI MAIN DECK



THE PHINISI LOWER DECK



Double / Twin	Cabin 1
Fixed Twin	Cabin 2 & 3
Flexible Twin	Cabin 4 & 5
Quad Cabins	Cabin 6 & 7

BLUE HORIZON / BLUE MELODY



photo credit: Simon Lorenz

We offer a variety of itineraries in the Egyptian Red Sea which cover different areas of the North and South. Published prices are based on the areas covered and the time of year.

Northern itineraries

- Red Sea Wrecks
- Northern Red Sea Wrecks & Reefs
- North & Safaga
- Strait of Tiran & North
- Northern Red Sea & Brothers

Southern itineraries

- Brothers, Safaga & Elphinstone
- Brothers, Daedalus & Elphinstone
- Ultimate Red Sea
- Best of the Red Sea
- Deep South
- Daedalus & St. Johns
- Rocky, Zabargad & St. John's

Prices listed on the following pages are per person, based on two people sharing. Single occupancy is subject to an 80% supplemental charge.

Full charter on both vessels is 26 spaces with rates calculated as 23 paid + 3 FOC.

We also offer group rates calculated on the cabin spaces requested, with 1 FOC space for groups of 8, and 2 FOC spaces for groups of 16.

FOC spaces for charter and group bookings are deducted at the lowest-priced cabin rate.

BLUE HORIZON / BLUE MELODY



Inclusions

- Shared embarkation/disembarkation transfers
- Accommodation based on shared occupancy
- Towels, linen, and air conditioning
- Full board including breakfast, lunch, dinner and snacks
- Drinking water, soft drinks, tea and coffee
- Up to 4 guided dives per day
- Single 11 Litre (AL80) cylinder with air fills
- Weights, weigh belt, SMB and reel

Exclusions

- Flights
- Visas
- Insurance (compulsory)
- Government Reef Taxes
- GST (applies to onboard payments)
- Equipment rental
- Additional cylinders
- Nitrox
- Oxygen fills
- Rebreather consumables
- Alcoholic beverages
- Tonic Water

Please visit our website for an up-to-date price list of the extras.

BLUE HORIZON



2025 Retail Rates			Classic Cabin	Premium Cabin	Full Charter Rates
Dec-Mar	Northern	7 nights	1,050 USD	1,155 USD	24,990 USD
Apr-Aug/Nov	Northern	7 nights	1,295 USD	1,400 USD	30,625 USD
	Southern	7 nights	1,505 USD	1,610 USD	35,455 USD
		10 nights	2,150 USD	2,300 USD	50,650 USD
Sept-Oct	Northern	7 nights	1,505 USD	1,610 USD	35,455 USD
	Southern	7 nights	1,680 USD	1,785 USD	39,480 USD
		10 nights	2,400 USD	2,550 USD	56,400 USD

2026 Retail Rates			Classic Cabin	Premium Cabin	Full Charter Rates
Dec-Mar	Northern	7 nights	1,155 USD	1,260 USD	27,405 USD
Apr-Aug/Nov	Northern	7 nights	1,400 USD	1,505 USD	33,040 USD
	Southern	7 nights	1,610 USD	1,715 USD	37,870 USD
Sept-Oct	Northern	7 nights	1,610 USD	1,715 USD	37,870 USD
	Southern	7 nights	1,785 USD	1,890 USD	41,895 USD
		10 nights	2,550 USD	2,700 USD	59,850 USD

2027 Retail Rates			Classic Cabin	Premium Cabin	Full Charter Rates
Dec-Mar	Northern	7 nights	1,260 USD	1,365 USD	29,820 USD
Apr-Aug/Nov	Northern	7 nights	1,505 USD	1,610 USD	35,455 USD
	Southern	7 nights	1,715 USD	1,820 USD	40,285 USD
Sept-Oct	Northern	7 nights	1,715 USD	1,820 USD	40,285 USD
	Southern	7 nights	1,890 USD	1,995 USD	44,310 USD

2028 Retail Rates			Classic Cabin	Premium Cabin	Full Charter Rates
Dec-Mar	Northern	7 nights	1,260 USD	1,365 USD	29,820 USD
Apr-Aug/Nov	Northern	7 nights	1,505 USD	1,610 USD	35,455 USD
	Southern	7 nights	1,715 USD	1,820 USD	40,285 USD
Sept-Oct	Northern	7 nights	1,715 USD	1,820 USD	40,285 USD
	Southern	7 nights	1,890 USD	1,995 USD	44,310 USD

BLUE HORIZON



TOP DECK



UPPER DECK



MID DECK



LOWER DECK

Cabins 1-4: Premium Fixed Double

Cabins 5-9: Classic Twin/Double

Cabins 10-13: Classic Fixed Twin

BLUE MELODY



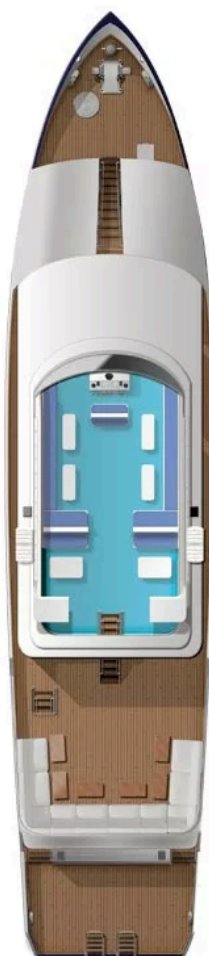
2025 Retail Rates			Classic Cabin	Premium Cabin	Full Charter Rates
Dec-Mar	Northern	7 nights	1,050 USD	1,155 USD	24,780 USD
Apr-Aug/Nov	Northern	7 nights	1,295 USD	1,400 USD	30,415 USD
	Southern	7 nights	1,505 USD	1,610 USD	35,245 USD
Sept-Oct	Northern	7 nights	1,505 USD	1,610 USD	35,245 USD
	Southern	7 nights	1,680 USD	1,785 USD	39,270 USD

2026 Retail Rates			Classic Cabin	Premium Cabin	Full Charter Rates
Dec-Mar	Northern	7 nights	1,155 USD	1,260 USD	27,195 USD
Apr-Aug/Nov	Northern	7 nights	1,400 USD	1,505 USD	32,830 USD
	Southern	7 nights	1,610 USD	1,715 USD	37,660 USD
Sept-Oct	Northern	7 nights	1,610 USD	1,715 USD	37,660 USD
	Southern	7 nights	1,785 USD	1,890 USD	41,685 USD

2027 Retail Rates			Classic Cabin	Premium Cabin	Full Charter Rates
Dec-Mar	Northern	7 nights	1,260 USD	1,365 USD	29,610 USD
Apr-Aug/Nov	Northern	7 nights	1,505 USD	1,610, USD	35,245 USD
	Southern	7 nights	1,715 USD	1,820 USD	40,075 USD
Sept-Oct	Northern	7 nights	1,715 USD	1,820 USD	40,075 USD
	Southern	7 nights	1,890 USD	1,995 USD	44,100 USD

2028 Retail Rates			Classic Cabin	Premium Cabin	Full Charter Rates
Dec-Mar	Northern	7 nights	1,260 USD	1,365 USD	29,610 USD
Apr-Aug/Nov	Northern	7 nights	1,505 USD	1,610, USD	35,245 USD
	Southern	7 nights	1,715 USD	1,820 USD	40,075 USD
Sept-Oct	Northern	7 nights	1,715 USD	1,820 USD	40,075 USD
	Southern	7 nights	1,890 USD	1,995 USD	44,100 USD

BLUE MELODY



TOP DECK



UPPER DECK



MID DECK



LOWER DECK

Note: Cabin 11 is no longer available - Deck plan is to be updated soon with new cabin layouts

Lower Deck - Cabins 1-10: Classic Fixed Twin

Upper Deck - Cabins 12-14: Premium Fixed Double

Palau Siren



Retail Rates - All cabins*		Standard itineraries		Spawning itineraries **	
		7 nights	10 nights	7 nights	10 nights
2025	Jan - May / Sept - Dec	4,340 USD	6,200 USD	4,580 USD	6,170 USD
	Off Peak (Jun - Aug)	3,745 USD	5,350 USD	3,985 USD	5,340 USD
2026	Jan - May / Sept - Dec	4,340 USD	6,200 USD	4,580 USD	6,170 USD
	Off Peak (Jun - Aug)	3,745 USD	5,350 USD	3,985 USD	5,340 USD
2027	Jan - May / Sept - Dec	4,340 USD	6,200 USD	4,580 USD	6,170 USD
	Off Peak (Jun - Aug)	3,745 USD	5,350 USD	3,985 USD	5,340 USD
2028	Jan - May / Sept - Dec	4,340 USD	6,200 USD	4,580 USD	6,170 USD
	Off Peak (Jun - Aug)	3,745 USD	5,350 USD	3,985 USD	5,340 USD

*Published prices are per person, based on two people sharing. Single occupancy is subject to an 80% supplemental charge.

** Spawning itinerary prices include a flat fee of 240 USD per person.

Full Charter Rates*		Standard itineraries		Spawning itineraries**	
		7 nights	10 nights	7 nights	10 nights
2025	Jan - May / Sept - Dec	60,760 USD	86,800 USD	64,600 USD	90,640 USD
	Off Peak (Jun - Aug)	52,430 USD	74,900 USD	56,270 USD	78,740 USD
2026	Jan - May / Sept - Dec	60,760 USD	86,800 USD	64,600 USD	90,640 USD
	Off Peak (Jun - Aug)	52,430 USD	74,900 USD	56,270 USD	78,740 USD
2027	Jan - May / Sept - Dec	60,760 USD	86,800 USD	64,600 USD	90,640 USD
	Off Peak (Jun - Aug)	52,430 USD	74,900 USD	56,270 USD	78,740 USD
2028	Jan - May / Sept - Dec	60,760 USD	86,800 USD	64,600 USD	90,640 USD
	Off Peak (Jun - Aug)	52,430 USD	74,900 USD	56,270 USD	78,740 USD

*Full charter rate is 16 spaces (14 paid + 2 FOC spaces). We also offer half charters as 7 + 1 FOC

**Charter rates for spawning itineraries include a flat fee of 240 USD per person, applicable to all paid and FOC spaces.

Palau Siren

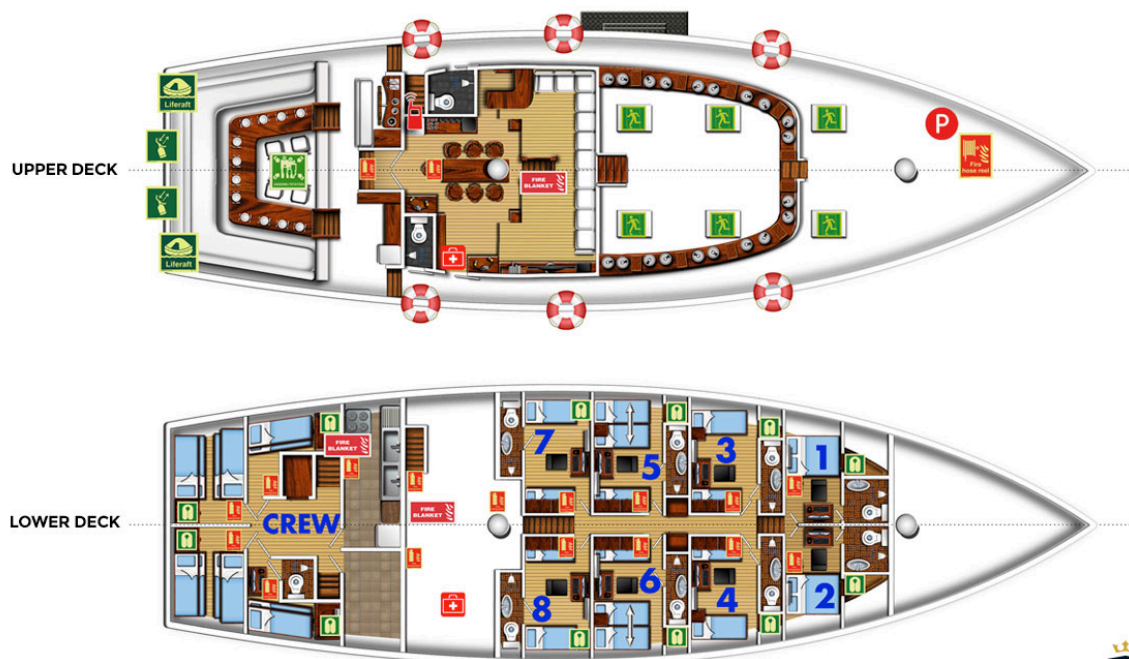
Inclusions

- Embarkation/disembarkation transfers
- En-suite, air-conditioned accommodation including towels, bed linen and shower gel.
- Full board including 3 meals and snacks, drinking water, soft drinks, fruit juices, tea, and coffee.
- Up to 4 guided dives per day
- 11 Litre (AL80) cylinder, weights & air fills.
- Deck towels

Exclusions

- International and domestic flights
- Port fees, permits and local taxes
- Alcoholic beverages
- Travel and dive insurance (compulsory)
- Dive computer and torch rental
- Applicable Port, Park and Tax fees
- Equipment rental
- Nitrox fills – up to 32%

Please visit our website for an up-to-date price list of the extras.



Cabins 1-2: Fixed Double

Cabins 3-4: Fixed Twin

Cabins 5-6: Convertible Twin

Cabins 7-8: Fixed Twin

PHILIPPINE SIREN



		6 nights	7 nights	10 nights	13 nights
2025	Jan-Feb / Sept-Dec	2,910 USD	3,395 USD	4,850 USD	-
	Tubbataha (Mar-May)	4,350 USD	-	-	7,865 USD
	June - August	2,580 USD	3,010 USD	4,300 USD	-
2026	Jan-Feb / Sept-Dec	2,910 USD	3,395 USD	4,850 USD	-
	Tubbataha (Mar-May)	4,350 USD	-	-	7,865 USD
	June - August	2,580 USD	3,010 USD	4,300 USD	-
2027	Jan-Feb / Sept-Dec	2,910 USD	3,395 USD	4,850 USD	-
	Tubbataha (Mar-June)	4,350 USD	-	-	7,865 USD
	July - August	2,580 USD	3,010 USD	4,300 USD	-
2028	Jan-Feb / Sept-Dec	2,910 USD	3,395 USD	4,850 USD	-
	Tubbataha (Mar-June)	4,350 USD	-	-	7,865 USD
	July - August	2,580 USD	3,010 USD	4,300 USD	-

Prices are per person, based on two people sharing. Single occupancy is subject to an 80% supplemental charge.

Full Charter Rates*		6 nights	7 nights	10 nights	13 nights
2025	Jan-Feb / Sept-Dec	40,740 USD	47,530 USD	67,900 USD	-
	Tubbataha (Mar-May)	60,900 USD	-	-	110,110 USD
	June - August	36,120 USD	42,140 USD	60,200 USD	-
2026	Jan-Feb / Sept-Dec	40,740 USD	47,530 USD	67,900 USD	-
	Tubbataha (Mar-May)	60,900 USD	-	-	110,110 USD
	June - August	36,120 USD	42,140 USD	60,200 USD	-
2027	Jan-Feb / Sept-Dec	40,740 USD	47,530 USD	67,900 USD	-
	Tubbataha (Mar-May)	60,900 USD	-	-	110,110 USD
	June - August	36,120 USD	42,140 USD	60,200 USD	-
2028	Jan-Feb / Sept-Dec	40,740 USD	47,530 USD	67,900 USD	-
	Tubbataha (Mar-May)	60,900 USD	-	-	110,110 USD
	June - August	36,120 USD	42,140 USD	60,200 USD	-

*Full charter rate is 16 spaces (14 paid + 2 FOC spaces). We also offer half charters as 7 + 1 FOC

PHILIPPINE SIREN

Inclusions

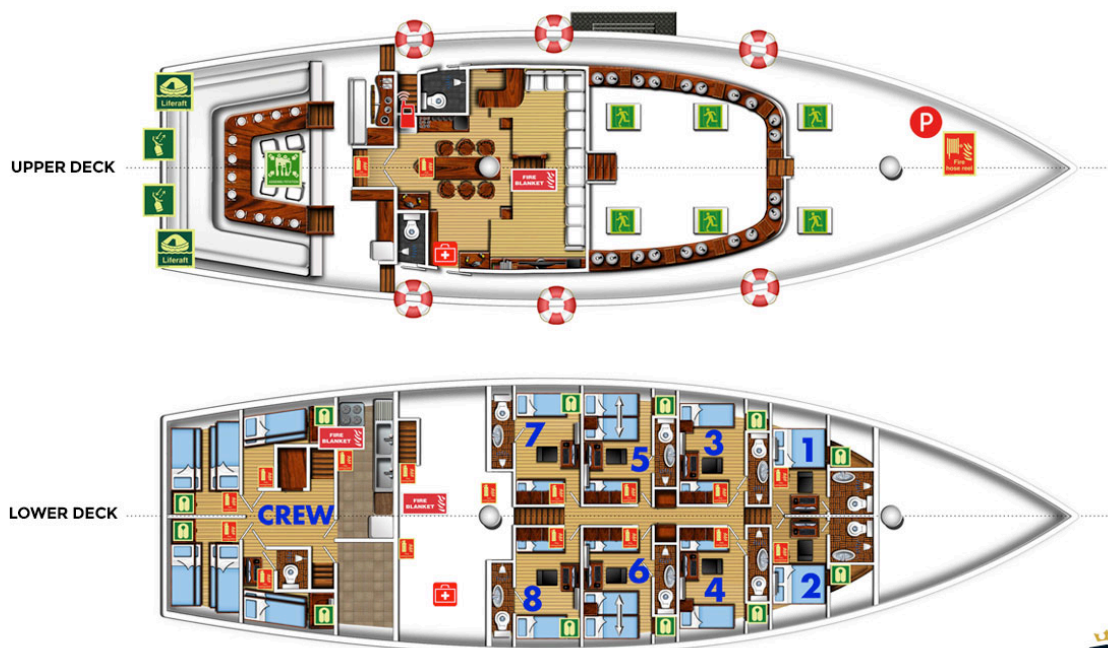
- Embarkation/disembarkation transfers*
- En-suite, air-conditioned accommodation
- Towels and shower gel.
- Full board including 3 meals and snacks, drinking water, soft drinks, fruit juices, tea, and coffee.
- Up to 4 guided dives per day, (3 day dives + 1 sunset/night dive, conditions permitting)
- 11 Litre (AL80) cylinder, weights & air fills.

*Additional charges apply on itineraries embarking or disembarking in Moalboal.

Exclusions

- International and domestic flights
- Transfer to/from Moalboal
- Applicable Port, Park and Tax fees
- Alcoholic beverages - wine and spirits are available
- Travel and dive insurance (compulsory)
- Scuba equipment rental
- Nitrox fills – up to 32%

Please visit our website for an up-to-date price list of the extras.



Cabins 1-2: Fixed Double

Cabins 3-4: Fixed Twin

Cabins 5-6: Convertible Twin

Cabins 7-8: Fixed Twin