

## Palau Central Hotel, Koror



As a landmark property, the original hotel opened in the 1980s to serve Palau's budding tourism market as well as Trust Territory representatives and regional investors. Located in the centre of the downtown area of Koror, the hotel is ideally situated for shopping, restaurants and a variety of activities.

Now fully renovated, the new **Palau Central Hotel** offers 50+ comfortable, state-of-the-art rooms, an in-house restaurant, a gift shop, a gym and a conference centre. All backed by outstanding service.

### Hotel Amenities and additional services

<ul style="list-style-type: none"> <li>• 24 hrs front desk</li> <li>• Concierge Service</li> <li>• Lobby lounge</li> <li>• Complimentary Wifi throughout</li> <li>• Free filtered water station</li> <li>• Room service</li> <li>• Laundry service</li> </ul>	<ul style="list-style-type: none"> <li>• Canoe House Bar &amp; Restaurant</li> <li>• Gift Shop</li> <li>• Spa</li> <li>• Shower room (Free for guests)</li> <li>• Mini Gym (Free for guests)</li> <li>• Outside pool area with sun loungers</li> </ul>
---------------------------------------------------------------------------------------------------------------------------------------------------------------------------------------------------------------------------------------------------------------	--------------------------------------------------------------------------------------------------------------------------------------------------------------------------------------------------------------------------------------------------------

• Check in at 14:00 hrs / Check out at 12.00, noon.

## Room Descriptions

All rooms feature a balcony with either Downtown or Rock Islands views. Room rates are per night, based on two people sharing and subject to 10% Palau Government room tax and 10% PGST (Palau Goods & Service Tax).

### Amenities included in room rates:

<ul style="list-style-type: none"><li>• Air conditioning</li><li>• Free cable TV &amp; Smart TV options</li><li>• USB charging ports &amp; media hubs</li><li>• Free in-room Wi-Fi</li><li>• Breakfast</li><li>• In-room mini-fridge</li></ul>	<ul style="list-style-type: none"><li>• Glass bottled drinking water</li><li>• Complimentary eco-friendly toiletries</li><li>• In room Keurig® coffee maker</li><li>• In room Tea making facilities</li><li>• Use of pool and sun loungers</li><li>• Complimentary beach towel use</li></ul>
------------------------------------------------------------------------------------------------------------------------------------------------------------------------------------------------------------------------------------------------	----------------------------------------------------------------------------------------------------------------------------------------------------------------------------------------------------------------------------------------------------------------------------------------------

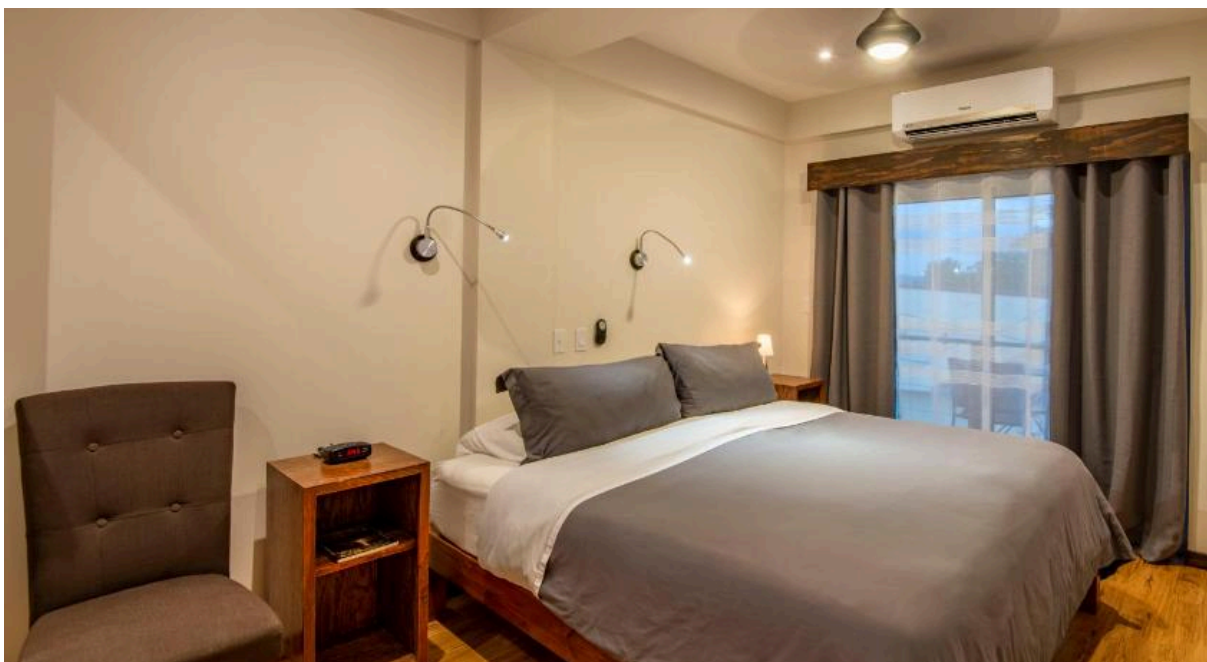
### Standard Room - Downtown View

Number of rooms: 28

Occupancy: 2 guests

Bed Type: 1 King or 2 Twin

Room size: 27 m<sup>2</sup> (290 square feet)



Indulge yourself in this air-conditioned, non-smoking Standard Room with one king or two twin beds. Facing downtown Koror, features include a rain shower, vanity and closet, reading lights, in-house safe, Serta® mattress, hypoallergenic pillows, microfiber comforter and all standard hotel amenities.

## Standard Room - Rock Islands View

Number of rooms: 10

Occupancy: 2 guests

Bed Type: 1 King or 2 Twin

Room size: 27 m<sup>2</sup> (290 square feet)



Enjoy the tranquility of Palau's stunning Rock Island Views in this air-conditioned, non-smoking room. Features include one king bed or two twin beds, rain shower, vanity and closet, reading lights, in-house safe, Serta® mattress, hypoallergenic pillows, microfiber comforter and all standard hotel amenities.





## Deluxe Room - Rock Islands View

Number of rooms: 6

Occupancy: 2-3 guests

Bed Type: 1 King + 1 Twin or 3 Twin

Room size: 34 m<sup>2</sup> (365 square feet)



This air-conditioned, non-smoking Deluxe Room features one single king & one twin bed or three twin-size beds in addition to all standard hotel amenities. Facing Palau's spectacular Rock Islands, it's a perfect refuge after a long day of tours and activities. Features include rain shower, clawfoot bathtub, vanity and closet, reading lights, Serta® mattress, Instant lights, On EcoGreen® water heater, hypoallergenic pillows, microfiber comforter and more.



## Room Rates (inclusive of taxes)

1st January 2025 - 1st January 2026	Per night
Standard Room - Downtown View	210USD
Standard Room - Rock Islands View	227 USD
Deluxe Room	227 USD

EXTEND CHECKOUT - Late checkout may be possible subject to room availability and the following charges:

- Beyond midday up until 20:00 will be charged at 50% of the per night rate.
- Room used beyond 20:00 hours will be charged at 100% of the per night.

AIRPORT TRANSFERS (rates including PGST)

- One way: 25 USD per person
- Round trip: 35 USD per person

For an additional charge why not opt to be picked up in the hotel's gorgeous '41 Chevrolet Fleetline? You won't find a more stylish taxi in Palau! Prices on request.



To check room rates and availability, or if you would like us to make a reservation for you, please contact us by email: [dive@masterliveboards.com](mailto:dive@masterliveboards.com)