



MASTER
LIVEBOARDS

Puerto Princesa Hotels

The following is a selection of suggested hotels within the Puerto Princesa City area. We provide these as suggestions based on a good record and feedback from guests who have stayed there in the past.

Prices are per room, per night, inclusive of taxes, and intended as a guideline only. Rates may vary from those indicated below depending on availability and season. If one of these options appeals to you, or you would like other suggestions to fit your requirements or budget, please let us know and we will confirm pricing and availability for your specific dates.

Prices are provided as a guideline only and may vary depending on availability.

Hue Hotel

Situated in the heart of Puerto Princesa City, Hue Hotels and Resorts and inspired by Palawan's lush environment, the property prides itself in its design-forward and culturally rooted architecture.

Hue Puerto Princesa's 122 rooms are thoughtfully appointed to embody the tranquil feeling of island life. A swathe of vibrant textures and a dynamic mix of materials create a sense of richness throughout the hotel, with thoughtful touches to ensure you always feel at home.

PLEASE NOTE: *Reservations for peak periods may be subject to a minimum number of nights and a supplement charge per room, per night.* The exact dates of peak periods vary each year but include one week covering Chinese New Year and 4 days during Holy Week (Easter).

Prices indicated on the following pages are standard rates converted from Philippines Pesos per room, per night, inclusive of taxes and breakfast.

- Check-in time is at 14:00
- Check-out time is at 12:00 (midday)

Early check-in or extended checkout time shall be charged accordingly.

- Early Check-in (06:00 to 14:00) - Half-day charge
- Late Check-out (12:00 to 18:00) - Half-day charge
- Late Check-out (18:01 onwards) - Full-day charge

DELUXE ROOM

The ideal respite from a day filled with adventure, the Deluxe Rooms are decorated with a polished minimalist motif, Machuca tile accents, and pops of bright colours. Tastefully furnished with all the essentials for your travels, these rooms are perfect for solo travellers or couples. Stylish and sensible, floor-to-ceiling windows ensure ample natural light and charming views.

Room Details

- 25 SQM
- 1 King Bed or 2 Twin Beds
- Room Capacity: 2 Adults

Prices from 139 USD per night



SUITE ROOM

More spacious and luxe, the Suite Rooms take your stay up a notch with a small dining area, perfect for lazy mornings and in-room breakfast service. The Suite Rooms also have a separate bathtub so you can wind down in complete tranquillity after an eventful day. A great option for couples or laid-back travellers, these rooms have been designed with rest and relaxation in mind.

Room Details

- 40 SQM
- 1 King Bed or 2 Twin Beds
- Room Capacity: 2 Adults

Prices from 165 USD per night



FAMILY ROOM

When your family and friends decide to tag along, a generous space is ideal for your vacation. With a cosy ambience, the family rooms consist of 2 connected Deluxe Rooms to accommodate the requirements of 2-4 people. 2 ensuite bathrooms make this setup the most practical and comfortable for the whole gang, while 2 separate work desks are also perfect for catching up on work or studies.

Room Details

- 50 SQM
- 1 King Bed & 1 Bunk Bed
- Room Capacity: 2-4 Persons

Prices from 199 USD per night

Canvas Boutique Hotel

Canvas Boutique Hotel boasts gorgeous, light-filled spaces in an unbeatable location, just a two-minute drive from the airport and offering complimentary airport transfers.

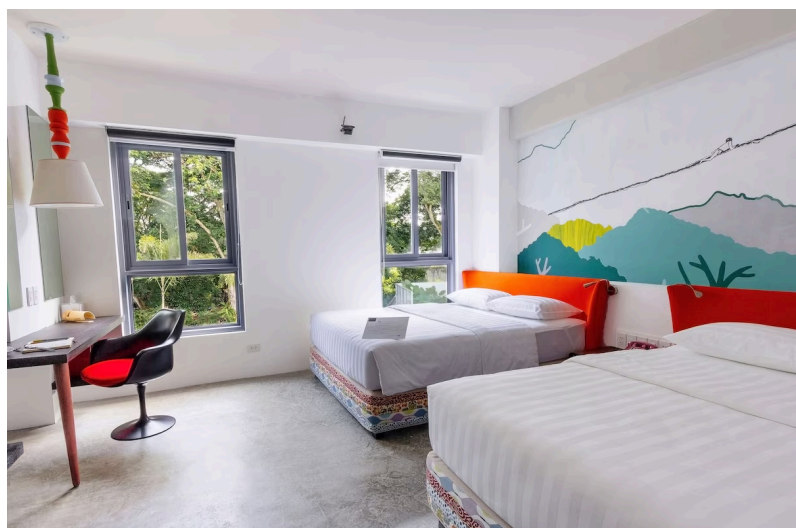


Canvas is aptly named with its interior design being a narrative of Palawan life rendered by a team of visual artists into colourful, hand-painted wall art that encapsulate images of the island's celebrated cultural traits interwoven with the hotel's contemporary fixtures.

Every floor unveils a different story through vibrant murals depicting Palawan's culture, nature, and mythology. From the captivating Underworld on the first floor to the enchanting Sea World on the second, the Earthy Land on the third, all the way up to the breathtaking Sky and Mountains on the fourth, Canvas Hotel invites you on an immersive adventure.

Offering a choice of Deluxe and Premier King or Twin Rooms, all guest accommodations are fully airconditioned and feature an ensuite bathroom, 40-inch LED cable television, complimentary tea and coffee facilities, free wi-fi and a work area with writing desk.

Prices from 118 USD per night



Aziza Paradise Hotel

Living up to its name, Aziza Paradise Hotel in Puerto Princesa gives a taste of a lush and carefree haven through nature-inspired interiors, excellent service, and eco-friendly practices. Featuring a large outdoor pool and garden, the Aziza Paradise Hotel is a child-friendly resort which also features a fitness centre, spa, hot tub, souvenir shop, onsite restaurant, coffee shop, snack bar and a nightclub.



Offering a choice of Superior or Deluxe Twin and Double rooms for two people sharing, all accommodations are air-conditioned, have free Wi-Fi and a balcony or terrace with garden or pool views, a sitting area and flat-screen TV with cable channels. The private bathroom includes a shower and free toiletries. On-site, the Voda Bar specialises in cocktails and alcoholic beverages, Kahve Brew serves hot and cold beverages, cake and pastries and The Demeter Diner offers local and international cuisine.

Prices from: 86 USD per night)

