

# The Lantern Resorts Patong

## 4 Star

The Lantern Resorts Patong is located on Soi Sansabi in the heart of the bustling Patong Beach area of Phuket. Just 580 metres from the beach, the hotel is conveniently situated for guests to experience the numerous attractions and varied dining options of Patong. The hotel has 3 outdoor swimming pools, Glow spa, fitness centre, all-day dining restaurant, and a variety of room types to suit your holiday needs.

Outdoor areas include gardens, poolside bar, shaded seating, decking, sun loungers and umbrellas.

### All rooms feature:

<ul style="list-style-type: none"> <li>• Air conditioning</li> <li>• Flat screen TV</li> <li>• IDD telephone</li> <li>• Wi-Fi internet access</li> <li>• In-room safe box</li> <li>• High Quality Premium Bedding</li> </ul>	<ul style="list-style-type: none"> <li>• Complimentary bottled water</li> <li>• Hair dryers, bathrobes and slippers</li> <li>• Ensuite bathroom</li> <li>• Complimentary toiletries</li> <li>• Kettle, tea and coffee</li> <li>• Mini fridge</li> </ul>
--	---

### Hotel Services

<ul style="list-style-type: none"> <li>• Welcome refreshments on arrival</li> <li>• 24 hrs front desk</li> <li>• Complimentary Wifi</li> <li>• Food delivery</li> </ul>	<ul style="list-style-type: none"> <li>• Massage</li> <li>• Laundry</li> <li>• Tour desk</li> <li>• Currency Exchange</li> </ul>
---	--

- Check in 14:00 hrs / Check out 12.00 hrs

### EXTEND CHECKOUT

Extended checkout may be possible subject to room availability and the following charges

- Beyond 12:00 hours up until 18:00 will be charged at 50% of the per night rate.
- Room used beyond 18:00 hours will be charged at 100% of the per night.

To check availability and rates, or if you would like us to make a reservation for you, please contact us by email: [dive@masterliveaboards.com](mailto:dive@masterliveaboards.com)

## Room Descriptions

Room rates indicated below are per room, per night and include buffet breakfast, service charge, and VAT. Rates are subject to revision, should the taxes levied by the Thai Government change.

### Special Conditions:

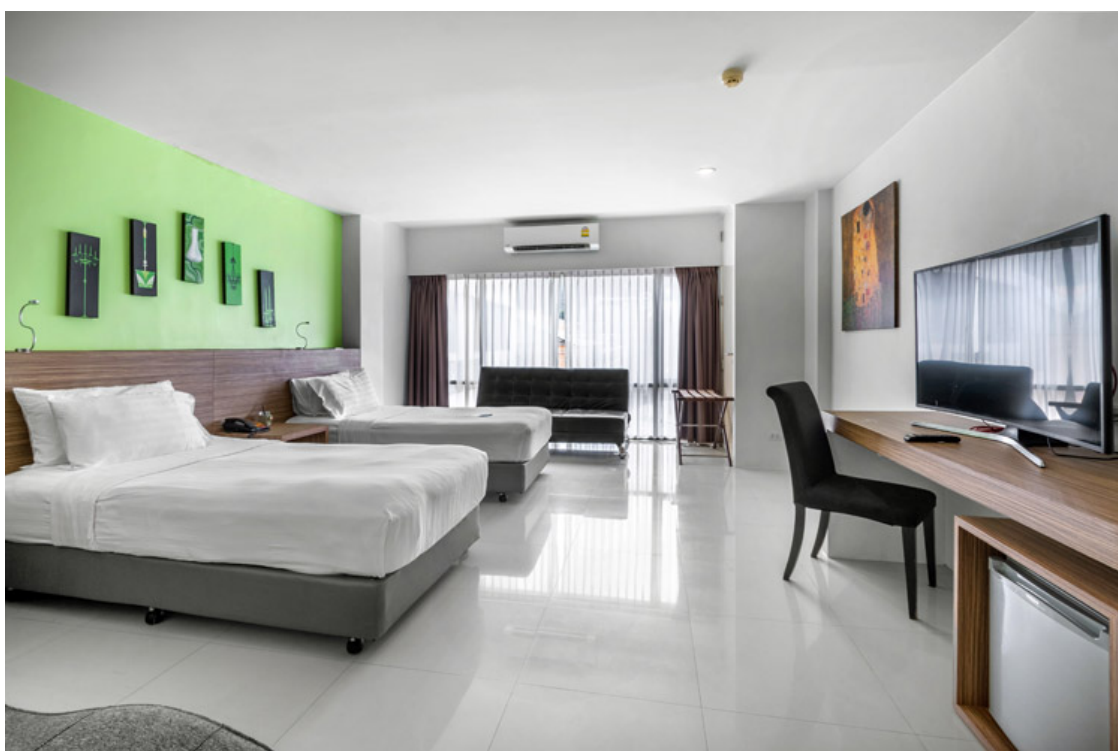
During: 27 Dec 2022– 05 Jan 2023 & 19 – 25 Jan 2023: minimum 2 nights consecutive stay is required

### View Pent Rooms

These rooms offer comfortable accommodation for 2, 3 or 4 guests with views of the city, gardens or pool area, luxurious amenities and a modern design. Some double occupancy View Pent rooms are available with a private balcony.

Size: 44 square metres

Bed options can be configured as single beds, up to maximum capacity or combined as King(s) + single(s)



	Twin / Double	Balcony	Triple	Quad
1st Nov - 27th December 2022	124 USD	139 USD	165 USD	187 USD
28th Dec 2022 - 5th Jan 2023	144 USD	159 USD	185 USD	223 USD
6th Jan - 15th April 2023	127 USD	142 USD	168 USD	191 USD
16th April - 31st October 2023	92 USD	107 USD	133 USD	155 USD

## Pool Pent

Located on the ground floor, the Pool Pent rooms offer direct access to the cosy pool from their own private terrace. The spacious bathroom is fitted with a separate bathtub and standing shower room

Size: 44 square metres with private terrace

Maximum occupancy: 2 adults

Bed options: 1 x King or 2 x twin



	Twin / Double
1st Nov - 27 Dec 2022	191 USD
28 Dec 22 - 5 Jan 2023	230 USD
6 Jan - 15 April 2023	195 USD
16 Apr - 31 Oct 2023	159 USD

## Luxury Pent (1 or 2 bedroom)

Luxury apartment style accommodation with spacious bedrooms, separate living room, equipped kitchenette and dining area, a well-appointed bathroom with rain shower. Each room is also fitted with a flat screen TV.

### 1 bedroom

Size: 50 square metres

Maximum occupancy: 2 adults

Bed options: 1 x King size

1 Nov-27 Dec 2022	124 USD
28 Dec-5 Jan 2023	144 USD
6 Jan -15 Apr 2023	127 USD
16 Apr - 31 Oct 2023	92 USD

### 2 bedrooms

Size: 90 square metres

Maximum occupancy: 4 adults

Beds: 2 x Kings **or** 1 King + 2 twin

1 Nov-27 Dec 2022	139 USD
28 Dec-5 Jan 2023	159 USD
6 Jan -15 Apr 2023	142 USD
16 Apr - 31 Oct 2023	107 USD

